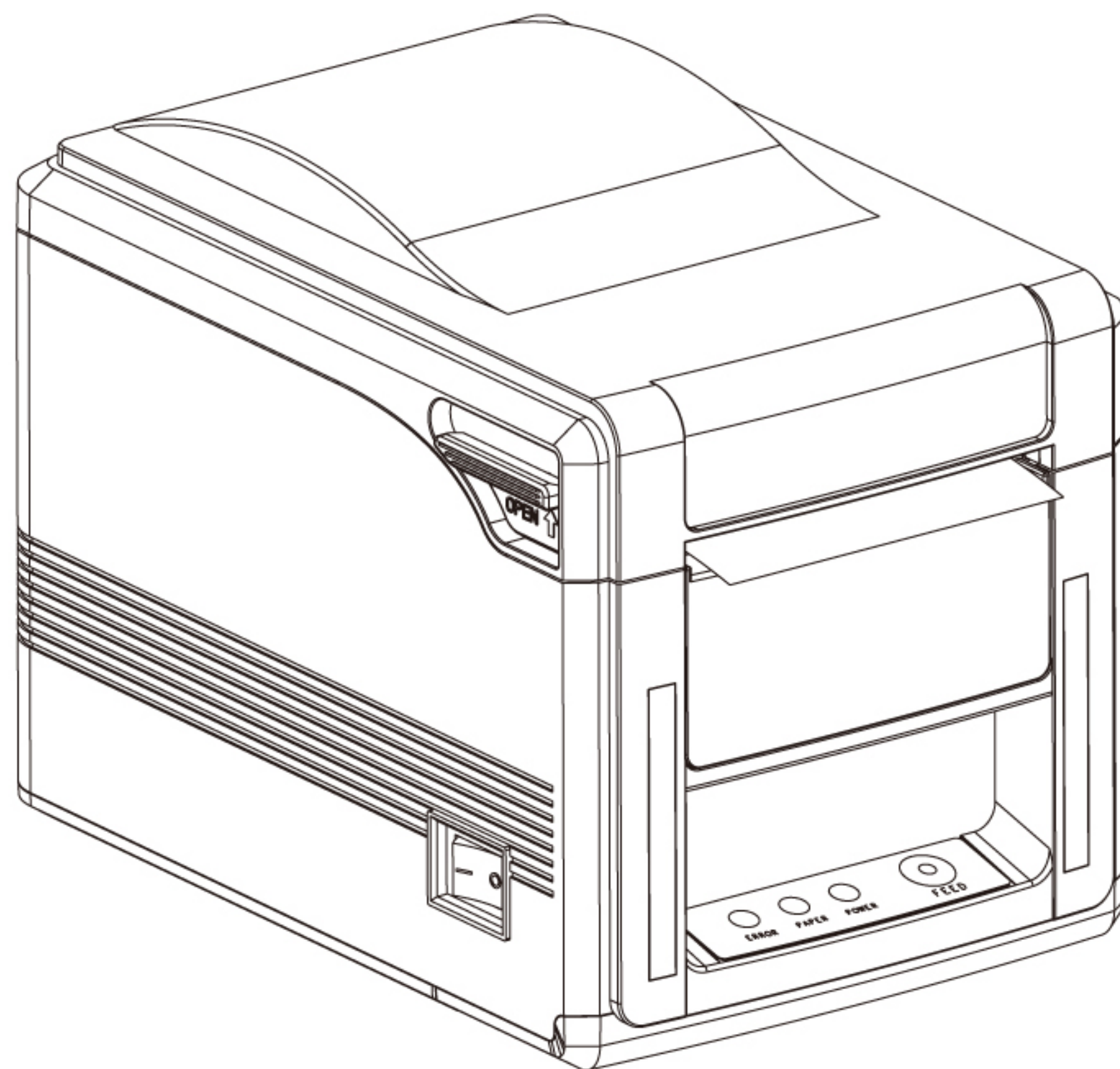


# User's Manual

## **GP-H80300IN**

**THERMAL RECEIPT PRINTER**



**Proficient in Commercial POS Receipt Printers**



### 1.Safety Notice:

- \* Don't touch the printer head with anything.
- \* Don't touch the cutter blade.
- \* Don't bend the power cord excessively or place any heavy objects onto it.
- \* Don't use the printer when it is out of order. This can cause a fire or and electrocution.
- \* When connecting or disconnecting the plug, always hold the plug but not the cord.
- \* Keep the desiccant out of children's reach.
- \* Use only approved accessories and do not try to disassemble, repair or remodel it by yourself.
- \* Install the printer on the stable surface. Choose firm, level surface where avoid vibration.
- \* Don't let water or other foreign objects into the printer.
- \* Don't connect a telephone line into the peripheral drive connector.
- \* We recommend that you unplug the printer from the power outlet if no use it for a long period .

### 2. Applications:

- \* POS system Receipts
- \* EFT POS system Receipts
- \* Gym, post, hospital, civil aviation system Receipts
- \* Inquiry, Service system Receipts
- \* Instrument test Receipts
- \* Tax, Tab Receipts

### 3. Unpacking

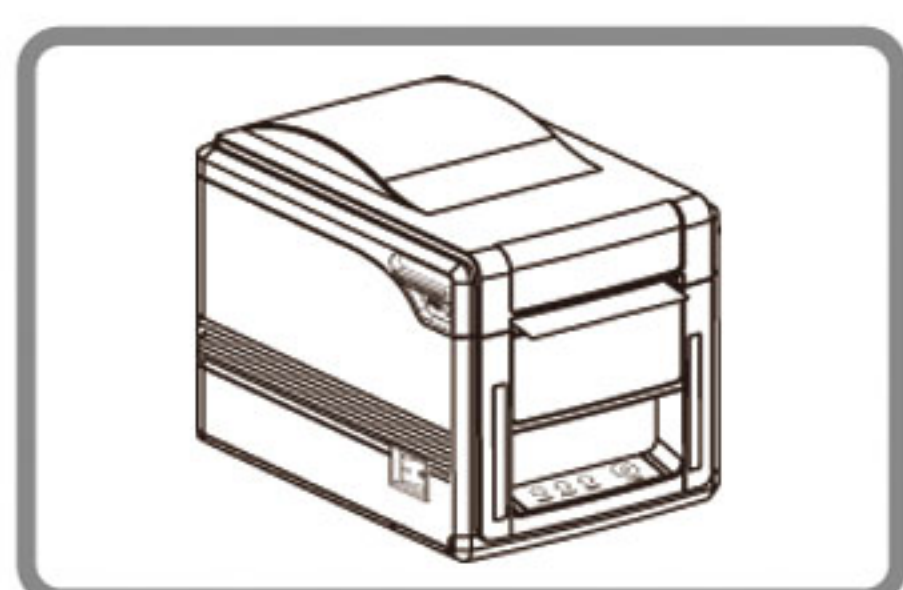
After unpacking the unit, check that all the necessary accessories are included in the package.

User's Manual	1 PCS
Printer	1 PCS
Data Cable	1 PCS
Power Adapter (include power cord)	1 SET



## 4. Features

- Build-in power adapter
- 300mm/s high speed printing
- Supports two-dimensional barcode printing function (QRCODE)
- Built-in loudspeaker enable to make bigger alarm for order notifications and error indication, ideal for noisy environment like kitchen
- Remarkable front long light tube designed for order notifications and error indication
- Support detection and notification function when receipt is leaving in paper exit
- All-in-one design of mechanism and cutter achieves high reliability and durability
- Support black mark detection function, black mark would be in the left, right and middle of backside of paper. (Optional)
- Support paper feeding and backing function, flexible control of printing position
- Front paper exit design, easy paper feeding
- 100M Ethernet interface to enable faster connection to avoid order missing
- Waterproof, oilproof, dustproof



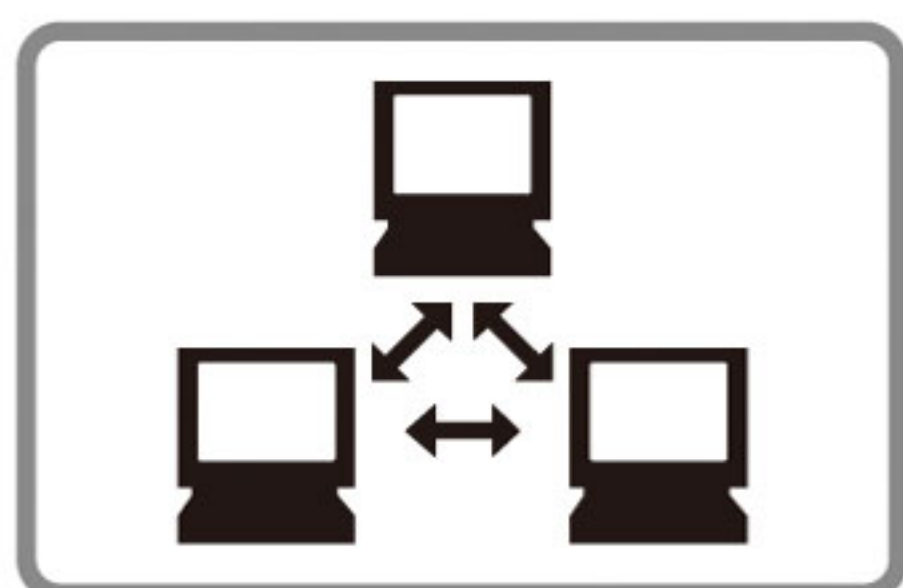
**Streamlined structure design**



**High-speed Printing**



**Printer Identification**



**Multiple Connection Printing**



**OPOS Driver**



**Various Character Sets**



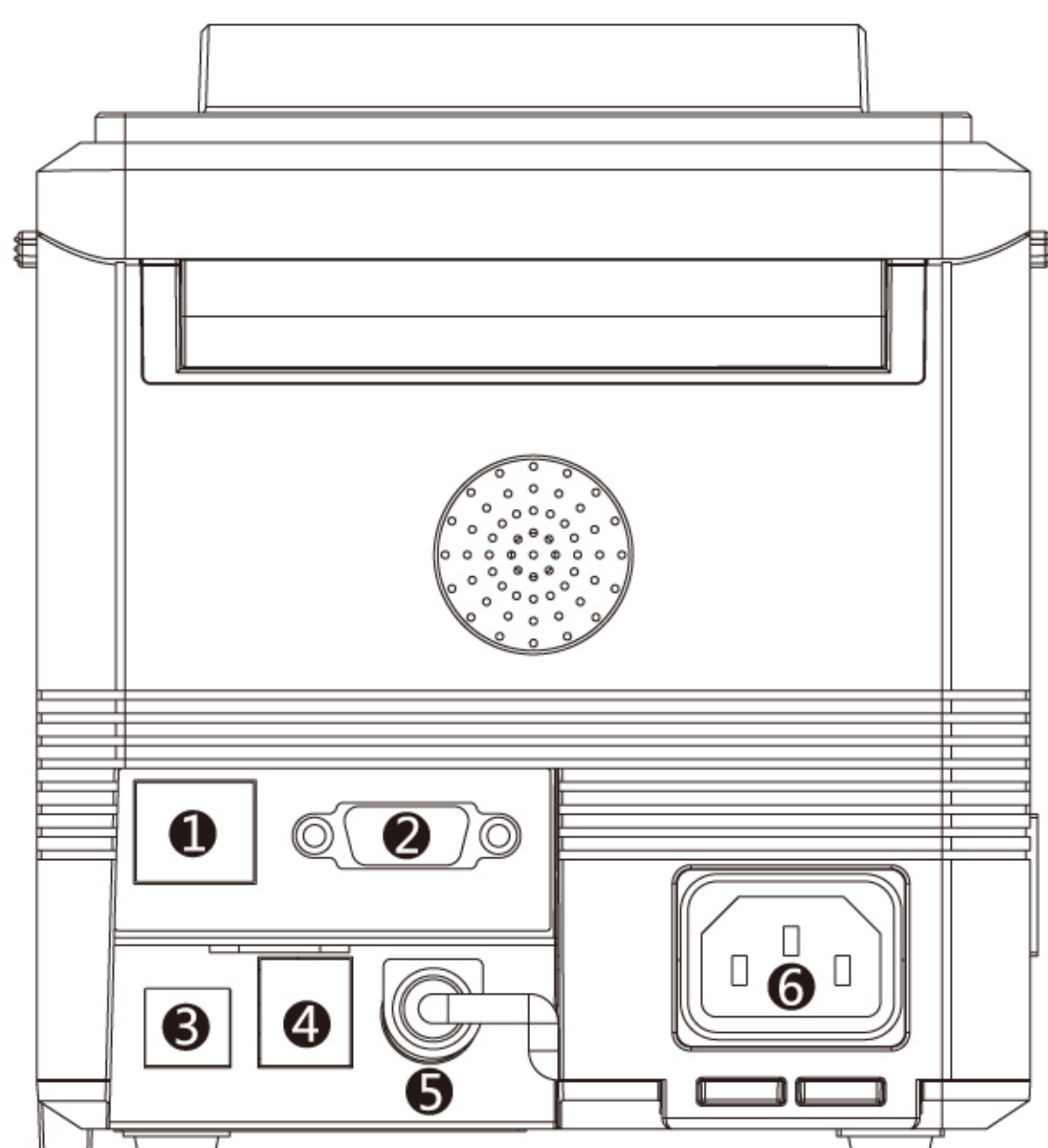
5.Specifications

Model	GP-H8030IN
Printing speed	300mm/sec
Paper roll	<b>Paper width:</b> 79.5+0.5mm <b>Max diameter:</b> 83mm
Printing width	72mm/64mm
Dot pitch	576dots / line&512dots / line
Character size	ANK Character, <b>Font A:</b> 12×24dots, <b>Font B:</b> 9×17dots, <b>Chinese:</b> 24×24dots
Print command	Compatible with ESC/POS
Interface	Serial+USB+Ethernet, USB+WIFI, USB+Bluetooth
Auto cutter	Partial
Reliability print	150Km
Barcode mode	UPC-A/UPC-E/JAN13(EAN13)/JAN8(EAN8)/CODE39/ ITF/CODABAR/CODE93/CODE128/QRCODE/PDF417
Paper thickness	0.06~0.08mm
Powersupply	DC 24V/2A
Power adapter	<b>Input:</b> AC110V~220V, 50~60HZ <b>Output:</b> DC 24V/2A
Cash drawer	DC 24V/1A
Work temperature	<b>Temperature:</b> 0~45℃, <b>Dampness:</b> 10~80%
Storage temperature	<b>Temperature:</b> -10~60℃, <b>Dampness:</b> 10~90%
Dimensions	156X217X160mm (WxDxH)



## 6. Printer Connection

- Plug the DC cord connector into the printer's power connector.
- Plug the data cable connector into the printer's interface connector.
- Plug the drawer cable into the drawer kick-out connector on the back of the printer next to the interface connector.

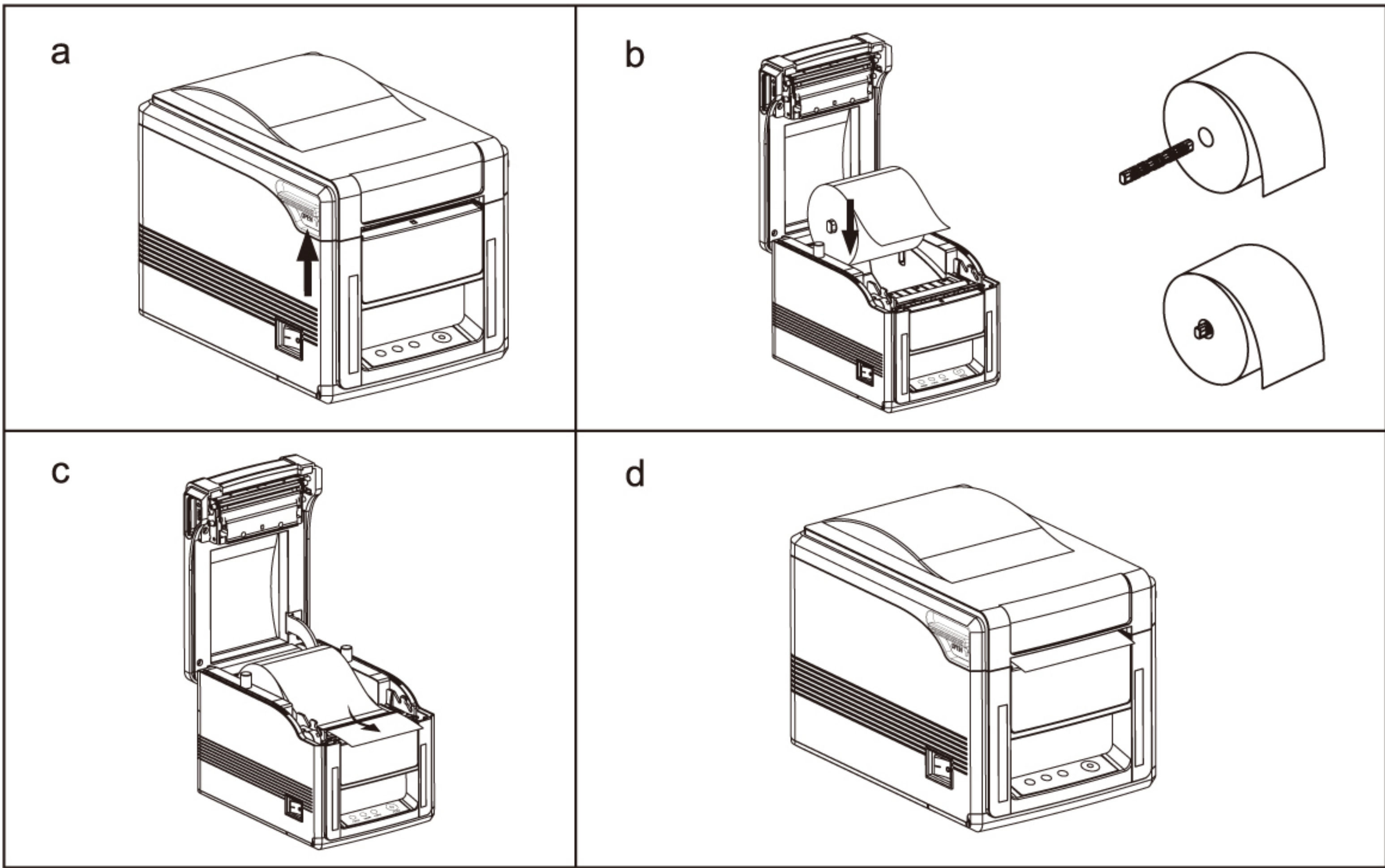


1. Ethernet
2. Serial
3. USB
4. Cashdrawer Port
5. Power Adapter
6. Power Cord

## 7. Installing the roll paper

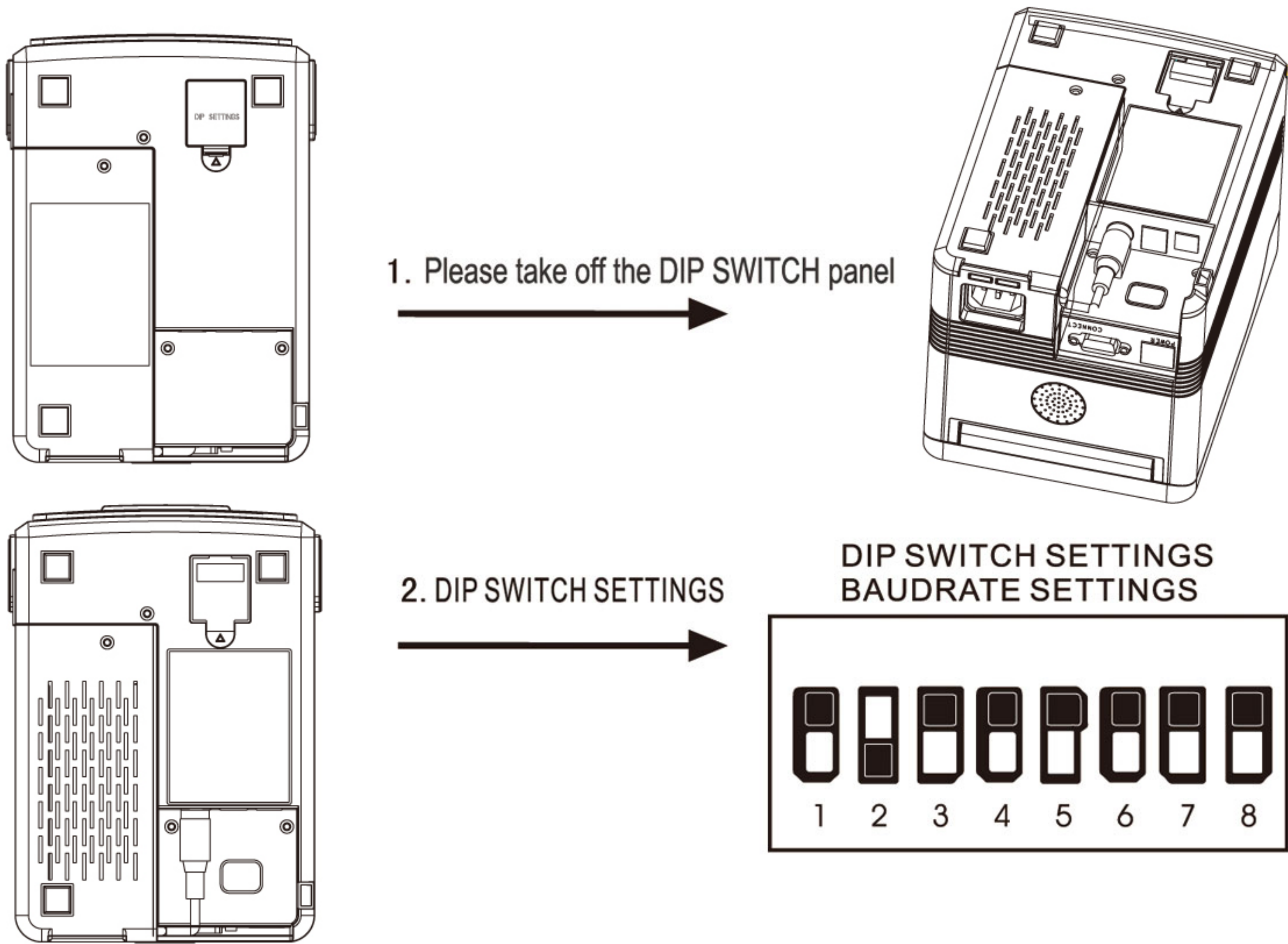
- a. Press the button to open the top cover.
- b. Install the paper roll into the printer.
- c. Pull out some paper outside the printer and then close the printer cover.
- d. Close the top cover. Press the printer cover to avoid error position of roll paper.





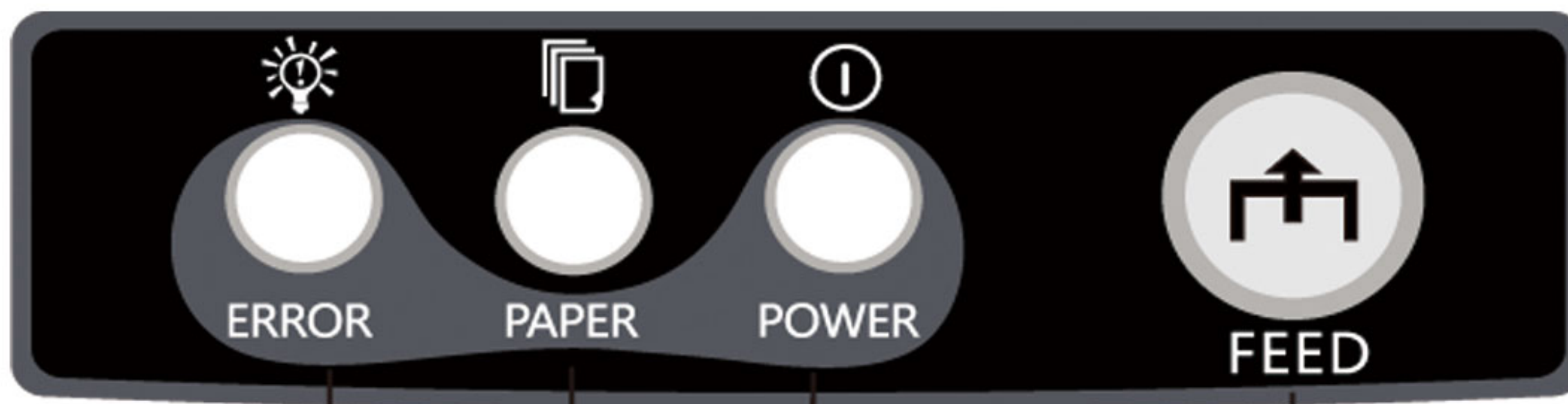
### 8. Setting the Printing Mode (DIP switches)

The DIP switches are used to set the printer to perform various functions, such as cutter mode, character set, speed, beeper, print density and etc.





## 9. Buttons and Indicators



## 10. Functions of buttons and indicators

### (1) . **FEED Button**

Press to feed paper manually.

### (2) . **PAPER Indicator**

When this indicator is lighting as well as the ERROR indicator, printer is out of paper.

When this indicator is dim as well as the ERROR indicator, printer has paper.

When this indicator is lighting but the ERROR indicator is dim, roll paper is near end.

### (3) . **POWER Indicator**

When this indicator lights, the printer is turned on.

When this indicator dims, the printer is turned off.

### (4) . **ERROR Indicator**

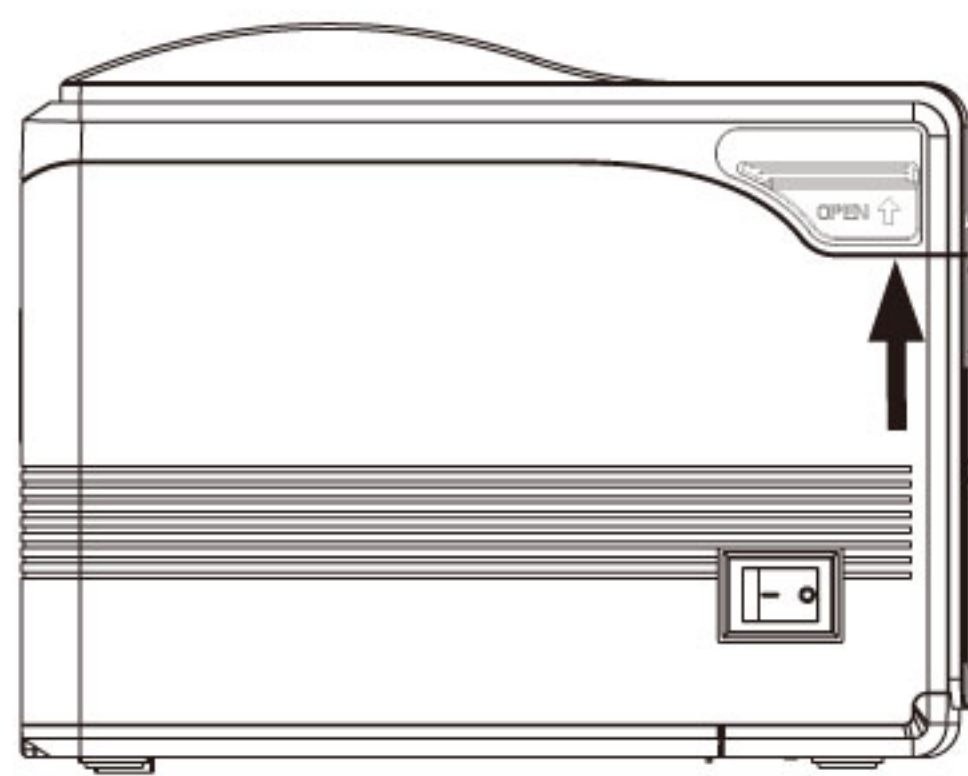
When printer is in the status of paper out, cutter error or print head overheat, this indicator is flashing according to user's defined setting.

## 11. Cutter Maintenance

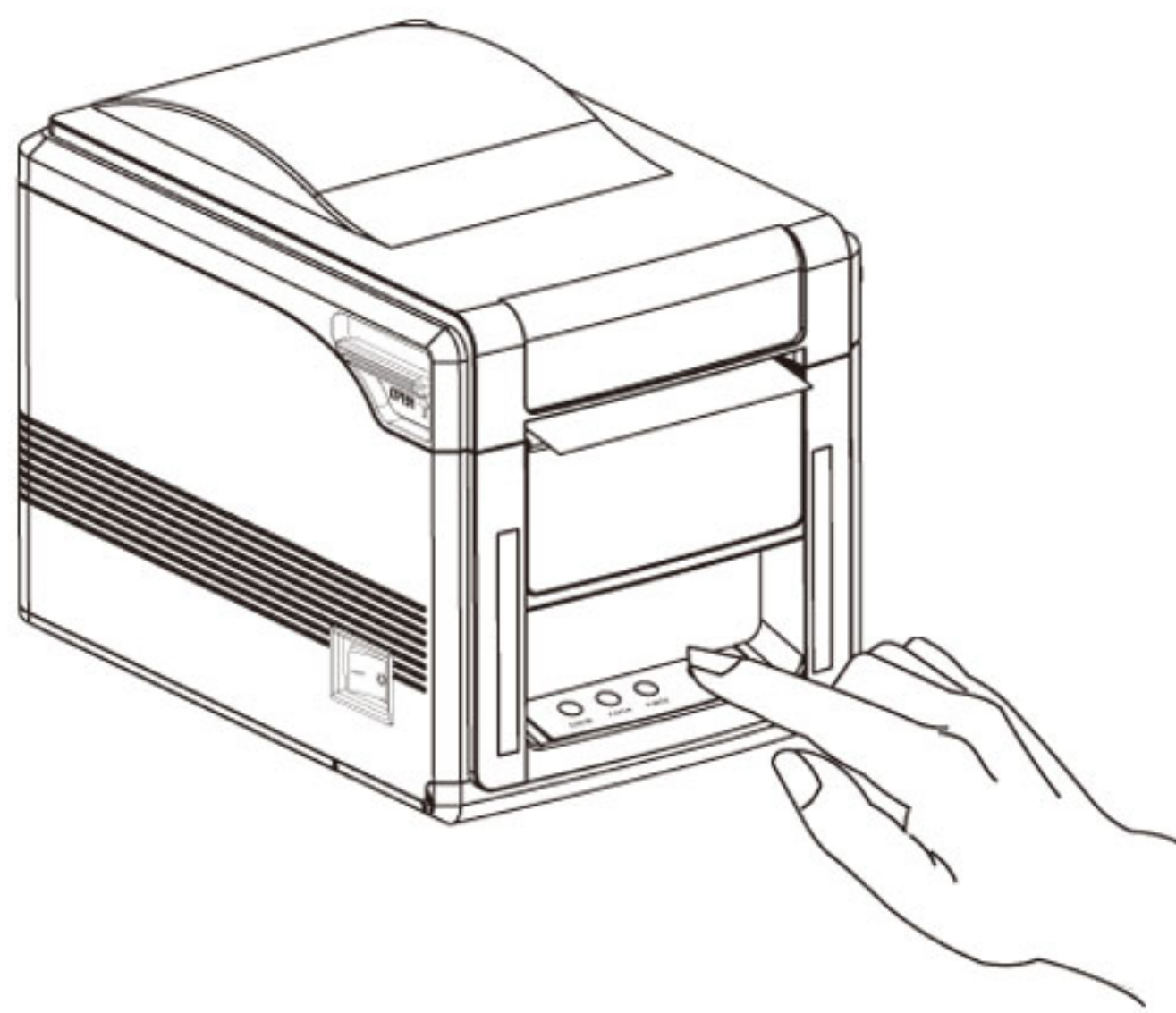
### Step

- a. Open the front cover.
- b. Press the FEED button, the cutter will be back to initial position.



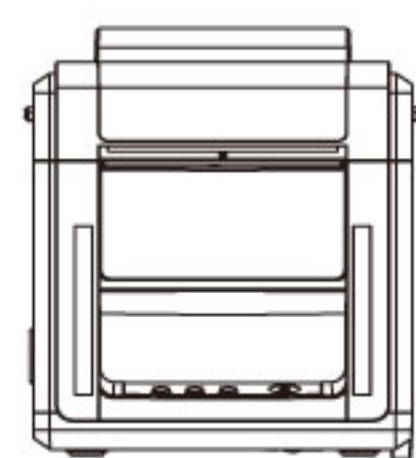
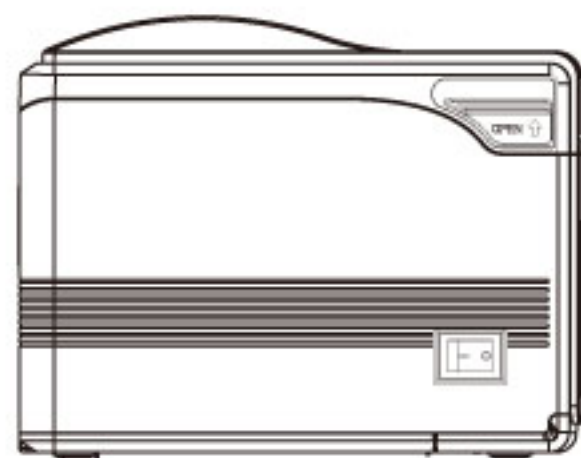
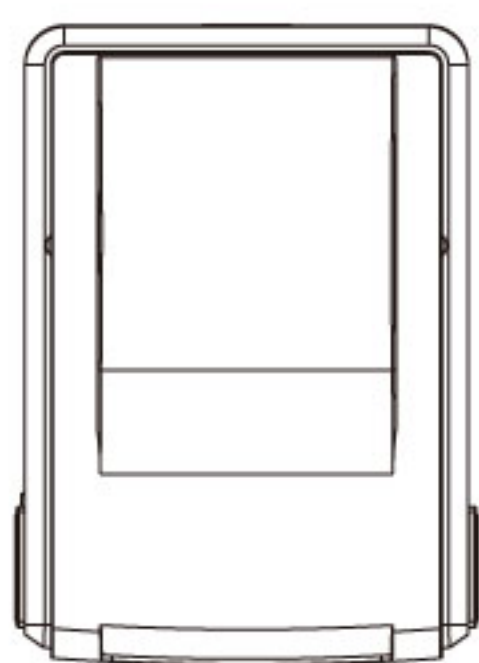


1. Open the cover by the arrow direction



2. Press FEED button

## 12. Printer view



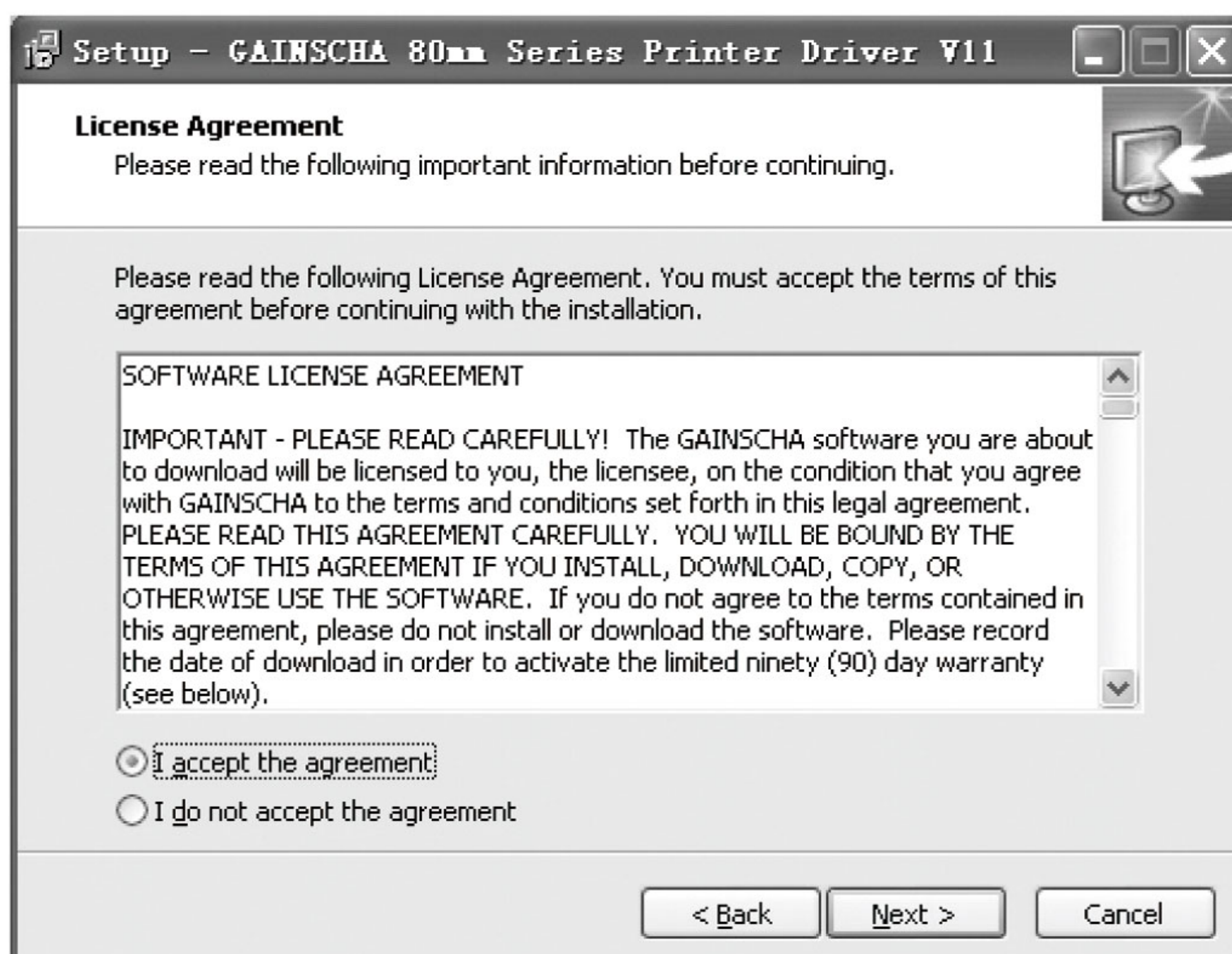


## 13. Driver Setup

- a. Insert the driver CD disk, run the GP80DRV EN V11 to set up.

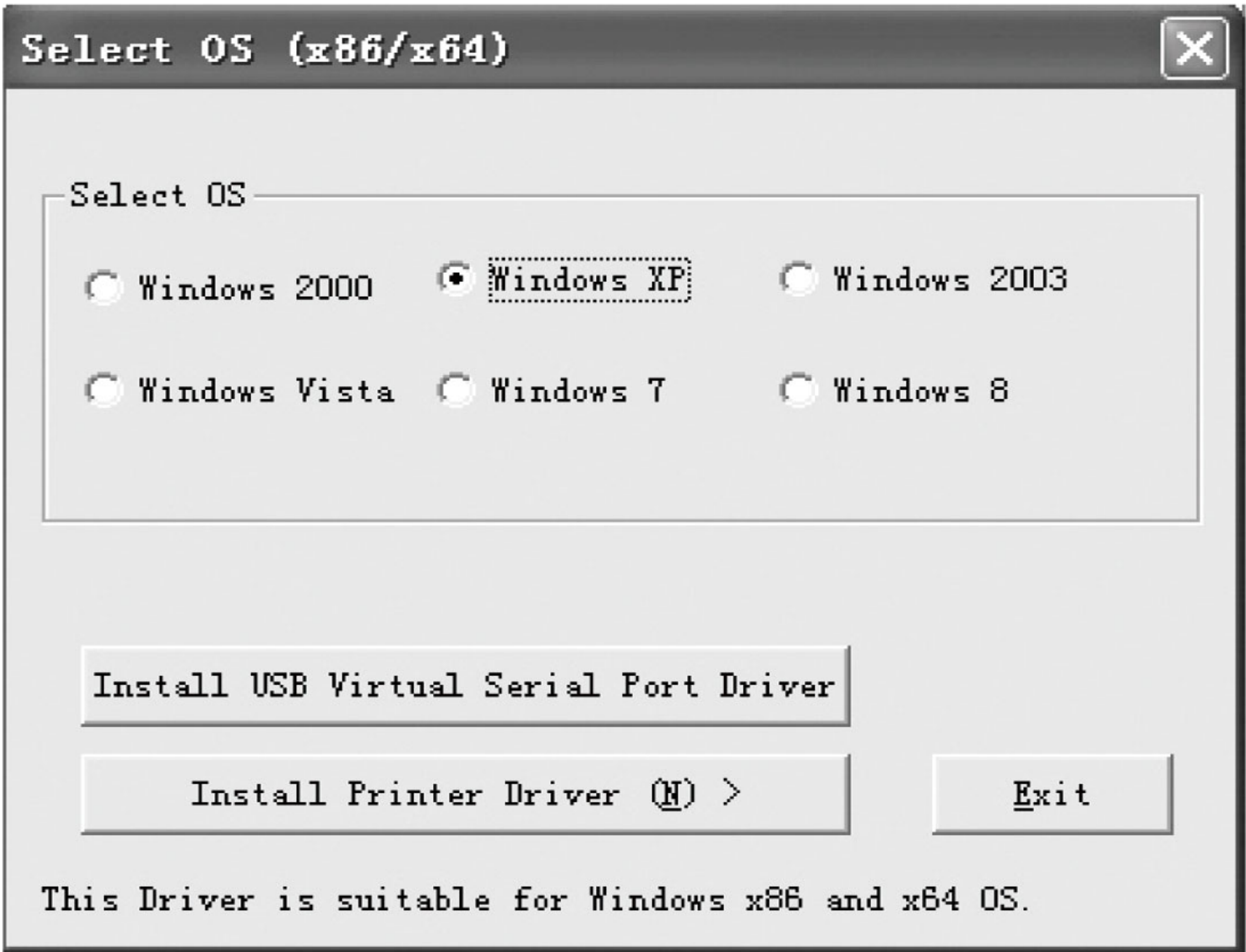


- b. Read and accept the terms to continue the setup

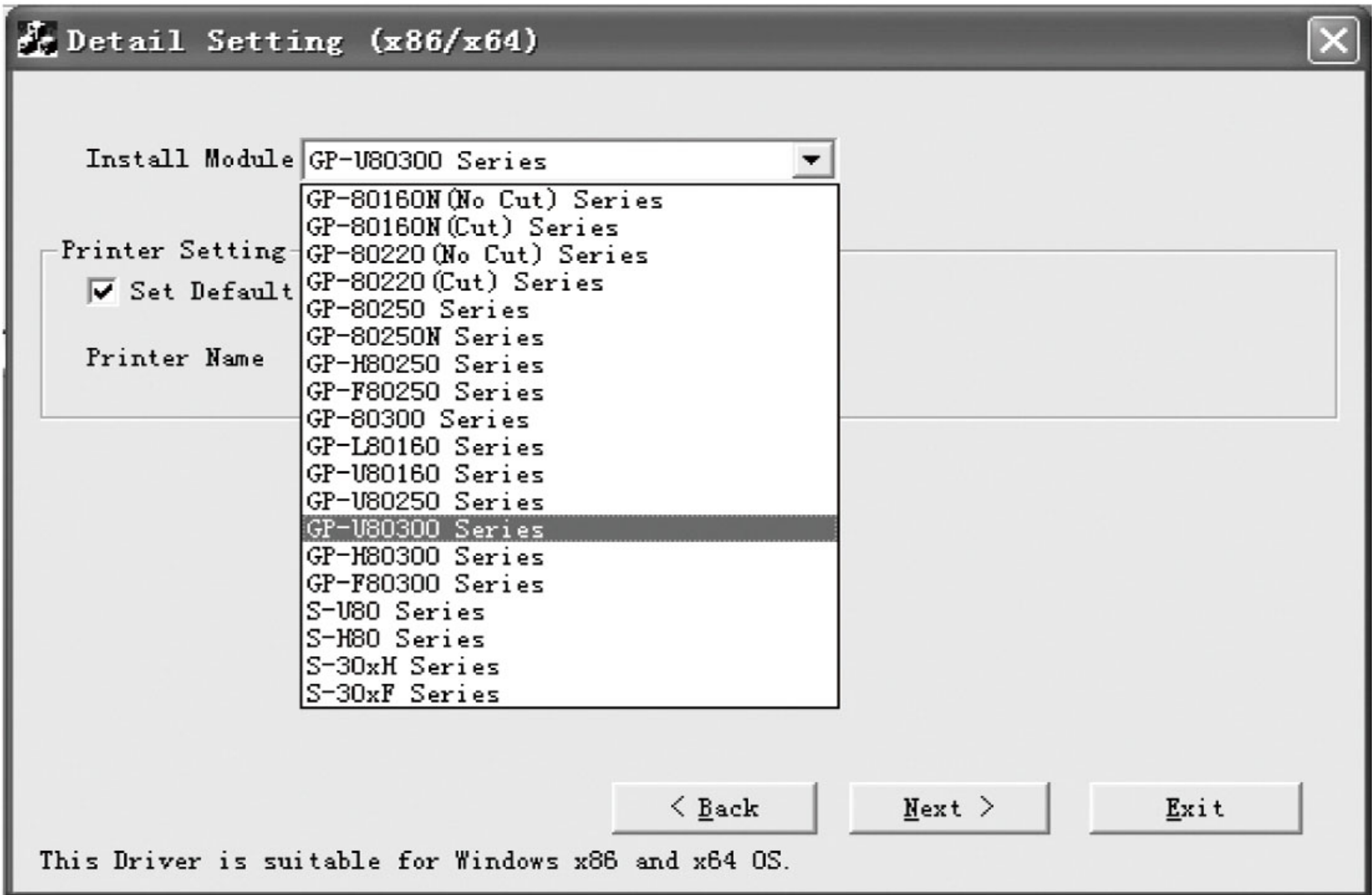




c. Select the operation system that you’re using, then click “next” to continue.



d. Select GP-U80300 Series to continue.





e. Select the corresponding printer port.

